

## Anti-CAP1 Antibody Picoband®

Catalog Number: PB9923

### About CAP1

Adenylyl cyclase-associated protein 1 is an enzyme that in humans is encoded by the CAP1 gene. This gene is mapped to 1p34.2. The protein encoded by this gene is related to the *S. cerevisiae* CAP protein, which is involved in the cyclic AMP pathway. And the human protein is able to interact with other molecules of the same protein, as well as with CAP2 and actin. Alternatively spliced transcript variants have been identified.

### Overview

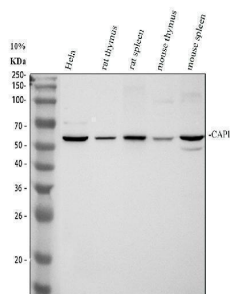
Product Name	Anti-CAP1 Antibody Picoband®
Reactive Species	Human, Mouse, Rat
Description	Boster Bio Anti-CAP1 Antibody Picoband® catalog # PB9923. Tested in WB applications. This antibody reacts with Human, Mouse, Rat. The brand Picoband indicates this is a premium antibody that guarantees superior quality, high affinity, and strong signals with minimal background in Western blot applications. Only our best-performing antibodies are designated as Picoband, ensuring unmatched performance.
Application	WB
Clonality	Polyclonal
Formulation	Each vial contains 4 mg Trehalose, 0.9 mg NaCl and 0.2 mg Na <sub>2</sub> HPO <sub>4</sub> .
Storage Instructions	Store at -20°C for one year from date of receipt. After reconstitution, at 4°C for one month. It can also be aliquotted and stored frozen at -20°C for six months. Avoid repeated freeze-thaw cycles.
Host	Rabbit
Uniprot ID	Q01518

### Technical Details

Immunogen	<i>E. coli</i> -derived human CAP1 recombinant protein (Position: A2-R123). Human CAP1 shares 92.6% and 93.4% amino acid (aa) sequence identity with mouse and rat CAP1, respectively.
Recommended Detection Systems	Boster recommends ECL Plus Western Blotting Substrate (Catalog # AR1196-200) for Western blot.
Cross Reactivity	No cross-reactivity with other proteins
Isotype	Rabbit IgG
Form	Lyophilized
Concentration	Adding 0.2 ml of distilled water will yield a concentration of 500 µg/ml.

Purification	Immunogen affinity purified.
Suggested Dilutions	Western blot, 0.1-0.5ug/ml, Human, Mouse, Rat

## Anti-CAP1 Antibody Picoband® (PB9923) Images



Western blot analysis of CAP1 using anti-CAP1 antibody (PB9923). Electrophoresis was performed on a 10% SDS-PAGE gel at 80V (Stacking gel) / 120V (Resolving gel) for 2 hours. The sample well of each lane was loaded with 30 ug of sample under reducing conditions. Lane 1: human Hela whole cell lysates, Lane 2: rat thymus tissue lysates, Lane 3: rat spleen tissue lysates, Lane 4: mouse thymus tissue lysates, Lane 5: mouse spleen tissue lysates. After electrophoresis, proteins were transferred to a nitrocellulose membrane at 150 mA for 50-90 minutes. Blocked the membrane with 5% non-fat milk/TBS for 1.5 hour at RT. The membrane was incubated with rabbit anti-CAP1 antigen affinity purified polyclonal antibody (PB9923) at 0.5 ug/mL overnight at 4°C, then washed with TBS-0.1%Tween 3 times with 5 minutes each and probed with a goat anti-rabbit IgG-HRP secondary antibody (Catalog # BA1054) at a dilution of 1:5000 for 1.5 hour at RT. The signal is developed using an ECL Plus Western Blotting Substrate (Catalog # AR1196-200) with Tanon 5200 system. A specific band was detected for CAP1 at approximately 55-60 kDa. The expected band size for CAP1 is at 52 kDa.

### Submit a product review to [Biocompare.com](https://www.biocompare.com)

Submit a review of this product to [Biocompare.com](https://www.biocompare.com) to receive a \$20 Amazon.com giftcard! Your reviews help your fellow scientists make the right decisions. Thank you for your contribution.



### Anti-CAP1 Antibody

For Research Use Only. Not for use in diagnostic procedures.