

Anti-Catalase Antibody Picoband®

Catalog Number: PB9925

About CAT

Catalase is a key antioxidant enzyme in the bodies defending against oxidative stress. It is also a heme enzyme that is present in the peroxisome of nearly all aerobic cells. Catalase converts the reactive oxygen species hydrogen peroxide to water and oxygen and thereby mitigates the toxic effects of hydrogen peroxide. Oxidative stress is hypothesized to play a role in the development of many chronic or late-onset diseases such as diabetes, asthma, Alzheimer's disease, systemic lupus erythematosus, rheumatoid arthritis, and cancers. Polymorphisms in this gene have been associated with decreases in catalase activity but, to date, acatalasemia is the only disease known to be caused by this gene.

Overview

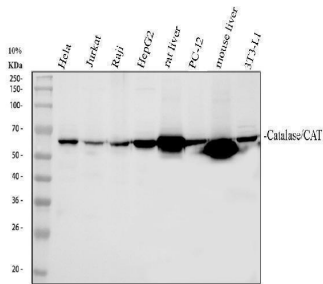
Product Name	Anti-Catalase Antibody Picoband®
Reactive Species	Human, Mouse, Rat
Description	Boster Bio Anti-Catalase Antibody Picoband® catalog # PB9925. Tested in Flow Cytometry, IF, IHC, ICC, WB applications. This antibody reacts with Human, Mouse, Rat. The brand Picoband indicates this is a premium antibody that guarantees superior quality, high affinity, and strong signals with minimal background in Western blot applications. Only our best-performing antibodies are designated as Picoband, ensuring unmatched performance.
Application	Flow Cytometry, IF, IHC, ICC, WB
Clonality	Polyclonal
Formulation	Each vial contains 4 mg Trehalose, 0.9 mg NaCl and 0.2 mg Na ₂ HPO ₄ .
Storage Instructions	Store at -20°C for one year from date of receipt. After reconstitution, at 4°C for one month. It can also be aliquotted and stored frozen at -20°C for six months. Avoid repeated freeze-thaw cycles.
Host	Rabbit
Uniprot ID	P04040

Technical Details

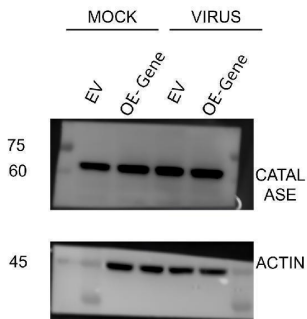
Immunogen	E. coli-derived human Catalase recombinant protein (Position: E344-L527). Human Catalase shares 85.3% and 82.6% amino acid (aa) sequence identity with mouse and rat Catalase, respectively.
Recommended Detection Systems	Boster recommends Enhanced Chemiluminescent Kit with anti-Rabbit IgG (EK1002) for Western blot, and HRP Conjugated anti-Rabbit IgG Super Vision Assay Kit (SV0002-1) for IHC(P), IHC(F) and ICC.
Cross Reactivity	No cross-reactivity with other proteins
Isotype	Rabbit IgG
Form	Lyophilized

Concentration	Adding 0.2 ml of distilled water will yield a concentration of 500 ug/ml.
Purification	Immunogen affinity purified.
Suggested Dilutions	Western blot, 0.1-0.5ug/ml, Human, Mouse, Rat Immunohistochemistry (Paraffin-embedded Section), 2-5ug/ml, Human Immunocytochemistry/Immunofluorescence, 5ug/ml, Human Flow Cytometry (Fixed), 1-3ug/1x10 ⁶ cells, Human

Anti-Catalase Antibody Picoband® (PB9925) Images

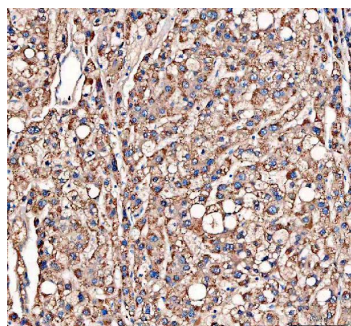


Western blot analysis of Catalase using anti-Catalase antibody (PB9925). Electrophoresis was performed on a 10% SDS-PAGE gel at 80V (Stacking gel) / 120V (Resolving gel) for 2 hours. The sample well of each lane was loaded with 30 ug of sample under reducing conditions. Lane 1: human HeLa whole cell lysates, Lane 2: human Jurkat whole cell lysates, Lane 3: human Raji whole cell lysates, Lane 4: human HepG2 whole cell lysates, Lane 5: rat liver tissue lysates, Lane 6: rat PC-12 whole cell lysates, Lane 7: mouse liver tissue lysates, Lane 6: mouse 3T3-L1 whole cell lysates. After electrophoresis, proteins were transferred to a nitrocellulose membrane at 150 mA for 50-90 minutes. Blocked the membrane with 5% non-fat milk/TBS for 1.5 hour at RT. The membrane was incubated with rabbit anti-Catalase antigen affinity purified polyclonal antibody (PB9925) at 0.5 ug/mL overnight at 4°C, then washed with TBS-0.1%Tween 3 times with 5 minutes each and probed with a goat anti-rabbit IgG-HRP secondary antibody (Catalog # BA1054) at a dilution of 1:5000 for 1.5 hour at RT. The signal is developed using an ECL Plus Western Blotting Substrate (Catalog # AR1196-200) with Tanon 5200 system. A specific band was detected for Catalase at approximately 60 kDa. The expected band size for Catalase is at 60 kDa.

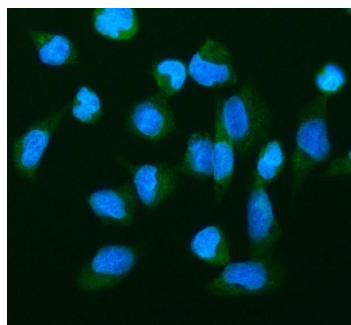


Western blot analysis of Catalase using anti-Catalase antibody (PB9925). Electrophoresis was performed on a 10% SDS-PAGE gel at 80V (Stacking gel) / 120V (Resolving gel) for 2 hours. The sample well of each lane was loaded with 30 ug of sample under reducing conditions. Lane 1: Mock group-EV-Monkey MARC-145 whole cell lysates, Lane 2: Mock group-OE-Monkey MARC-145 whole cell lysates, Lane 3: Virus group-EV-Monkey MARC-145 whole cell lysates, Lane 4: Virus group-OE-Monkey MARC-145 whole cell lysates,. After electrophoresis, proteins were transferred to a nitrocellulose membrane at 150 mA for 50-90 minutes. Blocked the membrane with 5% non-fat milk/TBS for 1.5 hour at RT. The membrane was incubated with rabbit anti-Catalase antigen affinity purified polyclonal antibody (PB9925) at 1:1000 overnight at 4°C, then washed with TBS-0.1%Tween 3 times with 5 minutes each and probed with a HRP-conjugated anti-rabbit IgG secondary antibody at a dilution of for 1 hour at RT. The signal is developed using an ECL Plus Western Blotting Substrate (Catalog # AR1196-200) with Unitec Cambridge system. A specific band was detected for Catalase at approximately 63 kDa. The expected band size for Catalase is at 60 kDa.

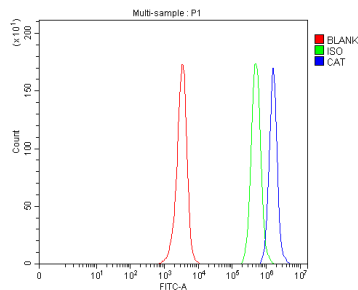
IHC analysis of Catalase using anti-Catalase antibody (PB9925). Catalase was detected in a paraffin-embedded section of human liver cancer tissue. Heat mediated antigen retrieval was performed in EDTA buffer (pH 8.0, epitope retrieval solution). The tissue section was blocked with 10% goat serum. The tissue section was then incubated with 2



ug/ml rabbit anti-Catalase Antibody (PB9925) overnight at 4°C. Peroxidase Conjugated Goat Anti-rabbit IgG was used as secondary antibody and incubated for 30 minutes at 37°C. The tissue section was developed using HRP Conjugated Rabbit IgG Super Vision Assay Kit (Catalog # SV0002) with DAB as the chromogen.



IF analysis of Catalase using anti-Catalase antibody (PB9925). Catalase was detected in an immunocytochemical section of U2OS cells. Enzyme antigen retrieval was performed using IHC enzyme antigen retrieval reagent (AR0022) for 15 mins. The cells were blocked with 10% goat serum. And then incubated with 5 ug/mL rabbit anti-Catalase Antibody (PB9925) overnight at 4°C. Fluoro488 Conjugated Goat Anti-Rabbit IgG (BA1127) was used as secondary antibody at 1:500 dilution and incubated for 30 minutes at 37°C. The section was counterstained with DAPI. Visualize using a fluorescence microscope and filter sets appropriate for the label used.



Flow Cytometry analysis of Jurkat cells using anti-Catalase antibody (PB9925). Overlay histogram showing Jurkat cells stained with PB9925 (Blue line). To facilitate intracellular staining, cells were fixed with 4% paraformaldehyde and permeabilized with permeabilization buffer. The cells were blocked with 10% normal goat serum. And then incubated with rabbit anti-Catalase Antibody (PB9925, 1 ug/1x10⁶ cells) for 30 min at 20°C. DyLight®488 conjugated goat anti-rabbit IgG (BA1127, 5-10 ug/1x10⁶ cells) was used as secondary antibody for 30 minutes at 20°C. Isotype control antibody (Green line) was rabbit IgG (1 ug/1x10⁶) used under the same conditions. Unlabelled sample without incubation with primary antibody and secondary antibody (Red line) was used as a blank control.

Submit a product review to Biocompare.com

Submit a review of this product to Biocompare.com to receive a \$20 Amazon.com giftcard! Your reviews help your fellow scientists make the right decisions. Thank you for your contribution.



Anti-Catalase Antibody

For Research Use Only. Not for use in diagnostic procedures.