

Anti-EAAT1/SLC1A3 Antibody Picoband®

Catalog Number: PB9959

About SLC1A3

Solute carrier family 1 (glial high-affinity glutamate transporter), member 3, also known as SLC1A3, EAAT1 or GLAST, is a protein that in humans is encoded by the SLC1A3 gene. This gene is a member of high affinity glutamate transporter family. It is mapped to chromosome 5p13.2 by fluorescence in situ hybridization (FISH). And this gene transports L-glutamate and also L- and D-aspartate. It is essential for terminating the postsynaptic action of glutamate by rapidly removing released glutamate from the synaptic cleft. Furthermore, this gene acts as a symport by cotransporting sodium.

Overview

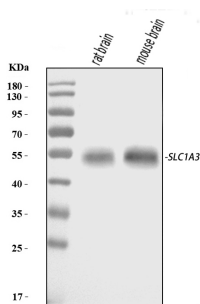
| | |
|----------------------|--|
| Product Name | Anti-EAAT1/SLC1A3 Antibody Picoband® |
| Reactive Species | Mouse, Rat |
| Description | Boster Bio Anti-EAAT1/SLC1A3 Antibody Picoband® catalog # PB9959. Tested in WB applications. This antibody reacts with Mouse, Rat. The brand Picoband indicates this is a premium antibody that guarantees superior quality, high affinity, and strong signals with minimal background in Western blot applications. Only our best-performing antibodies are designated as Picoband, ensuring unmatched performance. |
| Application | WB |
| Clonality | Polyclonal |
| Formulation | Each vial contains 4 mg Trehalose, 0.9 mg NaCl and 0.2 mg Na ₂ HPO ₄ . |
| Storage Instructions | Store at -20°C for one year from date of receipt. After reconstitution, at 4°C for one month. It can also be aliquotted and stored frozen at -20°C for six months. Avoid repeated freeze-thaw cycles. |
| Host | Rabbit |
| Uniprot ID | P43003 |

Technical Details

| | |
|-------------------------------|--|
| Immunogen | A synthetic peptide corresponding to a sequence at the N-terminus of human EAAT1, different from the related mouse sequence by three amino acids, and identical to the related rat sequence. |
| Recommended Detection Systems | Boster recommends Enhanced Chemiluminescent Kit with anti-Rabbit IgG (EK1002) for Western blot. |
| Cross Reactivity | No cross-reactivity with other proteins |
| Isotype | Rabbit IgG |
| Form | Lyophilized |

| | |
|---------------------|---|
| Concentration | Adding 0.2 ml of distilled water will yield a concentration of 500 ug/ml. |
| Purification | Immunogen affinity purified. |
| Suggested Dilutions | Western blot, 0.1-0.5ug/ml, Mouse, Rat |

Anti-EAAT1/SLC1A3 Antibody Picoband® (PB9959) Images



Western blot analysis of EAAT1/SLC1A3 using anti-EAAT1/SLC1A3 antibody (PB9959). Electrophoresis was performed on a 5-20% SDS-PAGE gel at 70V (Stacking gel) / 90V (Resolving gel) for 2-3 hours. The sample well of each lane was loaded with 30 ug of sample under reducing conditions. Lane 1: rat brain tissue lysates, Lane 2: mouse brain tissue lysates. After electrophoresis, proteins were transferred to a nitrocellulose membrane at 150 mA for 50-90 minutes. Blocked the membrane with 5% non-fat milk/TBS for 1.5 hour at RT. The membrane was incubated with rabbit anti-EAAT1/SLC1A3 antigen affinity purified polyclonal antibody (Catalog # PB9959) at 0.5 ug/mL overnight at 4°C, then washed with TBS-0.1%Tween 3 times with 5 minutes each and probed with a goat anti-rabbit IgG-HRP secondary antibody at a dilution of 1:5000 for 1.5 hour at RT. The signal is developed using an Enhanced Chemiluminescent detection (ECL) kit (Catalog # EK1002) with Tanon 5200 system. A specific band was detected for EAAT1/SLC1A3 at approximately 60 kDa. The expected band size for EAAT1/SLC1A3 is at 60 kDa.

1 Publications Citing This Product

1. PubMed ID: 25371754, Ding Y, Zhang K, Liu S, Zhang Q, Ma C, Bruce Ic, Zhang X. Exp Ther Med. 2014 Dec;8(6):1909-1913. Epub 2014 Oct 15. Tumor Necrosis Factor-?? Promotes The Expression Of Excitatory Amino-Acid Transporter 2 In Astrocytes: Optimal Concentration And Inc...

Visit bosterbio.com/anti-eaat1-picoband-trade-antibody-pb9959-boster.html to see all 1 publications.

Submit a product review to Biocompare.com

Submit a review of this product to Biocompare.com to receive a \$20 Amazon.com giftcard! Your reviews help your fellow scientists make the right decisions. Thank you for your contribution.



Anti-EAAT1/SLC1A3 Antibody

For Research Use Only. Not for use in diagnostic procedures.