

Anti-Bcl2 alpha Antibody Picoband®

Catalog Number: RP1003

About BCL2

Immunoreactive BCL2 protein in the neoplastic cells of almost all follicular lymphomas whereas no BCL2 protein was detected in follicles affected by nonneoplastic processes or in normal lymphoid tissue. Every tumor with molecular-genetic evidence of t(14;18) translocation expressed detectable levels of BCL2 protein, regardless of whether the breakpoint was located in or at a distance from the BCL2 gene. Overexpression of BCL2 blocks the apoptotic death of a pro-B-lymphocyte cell line.

Overview

Product Name	Anti-Bcl2 alpha Antibody Picoband®
Reactive Species	Human
Description	Boster Bio Anti-Bcl2 alpha Antibody catalog # RP1003. Tested in ELISA, WB applications. This antibody reacts with Human. The brand Picoband indicates this is a premium antibody that guarantees superior quality, high affinity, and strong signals with minimal background in Western blot applications. Only our best-performing antibodies are designated as Picoband, ensuring unmatched performance.
Application	ELISA, WB
Clonality	Polyclonal
Formulation	Each vial contains 0.9mg NaCl, 0.2mg Na ₂ HPO ₄ , 0.05mg Na ₃ N. Carrier free (No BSA) form available in stock. If you want this antibody carrier free please specify "Carrier Free" or "No BSA" in your order note.
Storage Instructions	Store at -20°C for one year from date of receipt. After reconstitution, at 4°C for one month. It can also be aliquotted and stored frozen at -20°C for six months. Avoid repeated freeze-thaw cycles.
Host	Rabbit
Uniprot ID	P10415

Technical Details

Immunogen	E. coli-derived human BCL-2 recombinant protein (Position: M1-D211).
Recommended Detection Systems	Boster recommends Enhanced Chemiluminescent Kit with anti-Rabbit IgG (EK1002) for Western blot.
Cross Reactivity	No cross-reactivity with other proteins
Isotype	Rabbit IgG
Form	Lyophilized

Concentration	Adding 0.2 ml of distilled water will yield a concentration of 500 ug/ml.
Purification	Immunogen affinity purified.
Suggested Dilutions	ELISA, 0.1-0.5ug/ml, - Western blot, 0.1-0.5ug/ml, Human

Anti-Bcl2 alpha Antibody Picoband® (RP1003) Images

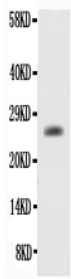


Figure. Western blot analysis of BCL-2 using anti-BCL-2 antibody (RP1003). Electrophoresis was performed on a 5-20% SDS-PAGE gel at 70V (Stacking gel) / 90V (Resolving gel) for 2-3 hours. The sample well of each lane was loaded with 50ug of sample under reducing conditions. Lane : Recombinant Human Bcl-2 Protein 0.5ng, After Electrophoresis, proteins were transferred to a Nitrocellulose membrane at 150mA for 50-90 minutes. Blocked the membrane with 5% Non-fat Milk/ TBS for 1.5 hour at RT. The membrane was incubated with rabbit anti-BCL-2 antigen affinity purified polyclonal antibody (Catalog # RP1003) at 0.5 ug/mL overnight at 4°C, then washed with TBS-0.1%Tween 3 times with 5 minutes each and probed with a goat anti-rabbit IgG-HRP secondary antibody at a dilution of 1:10000 for 1.5 hour at RT. The signal is developed using an Enhanced Chemiluminescent detection (ECL) kit (Catalog # EK1002) with Tanon 5200 system. A specific band was detected for BCL-2 at approximately 26KD. The expected band size for BCL-2 is at 26KD.

162 Publications Citing This Product

1. PubMed ID: 10.1016/j.biopha.2018.09.024, Scutellarein selectively targets multiple myeloma cells by increasing mitochondrial superoxide production and activating intrinsic apoptosis pathway
2. PubMed ID: 31215421, Long J,Liu Z,Hui L.Anti-tumor effect and mechanistic study of elemene on pancreatic carcinoma.BMC Complement Altern Med.2019 Jun 18;19(1):133.doi: 10.1186/s12906-019-2544-2.PMID:31215421;PMCID:PMC6582541.
3. PubMed ID: 34116043, Chen M,Wang Z,Zhou W,Lu C, Ji T, Yang W, Jin Z, Tian Y, Lei W, Wu S, Fu Q, Wu Z, Wu X, Han M, Fang M, Yang Y. SIRT1/PGC-1alpha signaling activation by mangiferin attenuates cerebral hypoxia/reoxygenation injury in neuroblastoma cells. Eur J Pharmacol. 2021 Jun 8;174236.doi:10.1016/j.ejphar.2021.174236. Epub ahead of print. PMID:34116043.

Visit bosterbio.com/anti-human-bcl-2-antibody-rp1003-boster.html to see all 162 publications.

Submit a product review to Biocompare.com

Submit a review of this product to Biocompare.com to receive a \$20 Amazon.com giftcard! Your reviews help your fellow scientists make the right decisions. Thank you for your contribution.



Anti-Bcl2 alpha Antibody

For Research Use Only. Not for use in diagnostic procedures.