

## Anti-CEACAM5 Antibody

Catalog Number: RP1018

### About CEACAM5

CEA (Carcinoembryonic antigen) is a glycoprotein involved in cell adhesion. It is normally produced during fetal development, but the production of CEA stops before birth. Therefore, it is not usually present in the blood of healthy adults, although levels are raised in heavy smokers. CEA is a glycosyl phosphatidyl inositol (GPI)-cell surface anchored glycoprotein whose specialized sialofucosylated glycoforms serve as functional colon carcinoma L-selectin and E-selectin ligands, which may be critical to the metastatic dissemination of colon carcinoma cells. CEA and related genes make up the CEA family belonging to the immunoglobulin superfamily. In humans, the carcinoembryonic antigen family consists of 29 genes, 18 of which are normally expressed.

### Overview

Product Name	Anti-CEACAM5 Antibody
Reactive Species	Human
Description	Boster Bio Anti-CEACAM5 Antibody catalog # RP1018. Tested in ELISA, IHC, WB applications. This antibody reacts with Human.
Application	ELISA, IHC, WB
Clonality	Polyclonal
Formulation	Each vial contains 0.9mg NaCl, 0.2mg Na <sub>2</sub> HPO <sub>4</sub> , 0.05mg NaN <sub>3</sub> . Carrier free (No BSA) form available in stock. If you want this antibody carrier free please specify "Carrier Free" or "No BSA" in your order note.
Storage Instructions	Store at -20°C for one year from date of receipt. After reconstitution, at 4°C for one month. It can also be aliquotted and stored frozen at -20°C for six months. Avoid repeated freeze-thaw cycles.
Host	Rabbit
Uniprot ID	P06731

### Technical Details

Immunogen	Insect cells-derived human CEA recombinant protein (Position: full).
Recommended Detection Systems	Boster recommends Enhanced Chemiluminescent Kit with anti-Rabbit IgG (EK1002) for Western blot, and HRP Conjugated anti-Rabbit IgG Super Vision Assay Kit (SV0002-1) for IHC(P).
Cross Reactivity	No cross-reactivity with other proteins
Isotype	Rabbit IgG
Form	Lyophilized

Concentration	Adding 0.2 ml of distilled water will yield a concentration of 500 $\mu$ g/ml.
Purification	Immunogen affinity purified.
Suggested Dilutions	<p>Dilute the sample so that the expected range of concentrations fall within the detection range of this kit.</p> <p>If the expected range of concentration is unknown, a pilot test should be conducted to decide the optimal dilution ratio for your samples.</p> <p>Some PubMed article(s) citing the expression level of this target are as follows: Boster Bio's internal QC testing used ELISA , 0.1-0.5 <math>\mu</math>g/ml, Human, - Immunohistochemistry (Paraffin-embedded Section), 0.5-1 <math>\mu</math>g/ml, Human, By Heat Western blot, 0.1-0.5 <math>\mu</math>g/ml, Human</p> <p>For protocols, please visit <a href="https://www.bosterbio.com/protocol-and-troubleshooting/">https://www.bosterbio.com/protocol-and-troubleshooting/</a></p>

## Anti-CEACAM5 Antibody (RP1018) Images

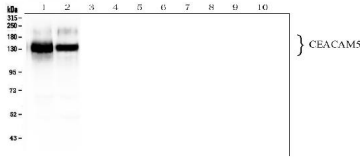


Figure 1. Western blot analysis of CEA using anti-CEA antibody (RP1018).

Electrophoresis was performed on a 5-20% SDS-PAGE gel at 70V (Stacking gel) / 90V (Resolving gel) for 2-3 hours. The sample well of each lane was loaded with 50ug of sample under reducing conditions.

Lane 1: human SW620 whole cell lysates,

Lane 2: human Caco-2 whole cell lysates,

Lane 3: mouse small intestine tissue lysates,

Lane 4: mouse stomach tissue lysates,

Lane 5: mouse lung tissue lysates,

Lane 6: mouse liver tissue lysates,

Lane 7: mouse NIH3T3 whole cell lysates,

Lane 8: mouse HEPA1-6 whole cell lysates,

Lane 9: mouse SP20 whole cell lysates,

Lane 10: rat RH35 whole cell lysates.

After Electrophoresis, proteins were transferred to a Nitrocellulose membrane at 150mA for 50-90 minutes. Blocked the membrane with 5% Non-fat Milk/ TBS for 1.5 hour at RT. The membrane was incubated with rabbit anti-CEA antigen affinity purified polyclonal antibody (Catalog # RP1018) at 0.5 ug/mL overnight at 4°C, then washed with TBS-0.1%Tween 3 times with 5 minutes each and probed with a goat anti-rabbit IgG-HRP secondary antibody at a dilution of 1:10000 for 1.5 hour at RT. The signal is developed using an Enhanced Chemiluminescent detection (ECL) kit (Catalog # EK1002) with Tanon 5200 system. A specific band was detected for CEA at approximately 120-200KD. The expected band size for CEA is at 77KD.

## Submit a product review to Biocompare.com

Submit a review of this product to Biocompare.com to receive a \$20 Amazon.com giftcard! Your reviews help your fellow scientists make the right decisions. Thank you for your contribution.



Anti-CEACAM5 Antibody