

Anti-Growth Hormone/GH1 Antibody

Catalog Number: RP1024

About Gh1

Growth Hormone (GH) is mapped to 17q22-q24. Growth hormone (GH) is synthesized by acidophilic or somatotropic cells of the anterior pituitary gland. Human growth hormone has a molecular mass of 22,005 and contains 191 amino acid residues with 2 disulfide bridges. It binds two receptor molecules and thereby induces signal transduction through receptor dimerization. At high concentrations, GH acts as an antagonist because of a large difference in affinities at the respective binding sites.

Overview

Product Name	Anti-Growth Hormone/GH1 Antibody
Reactive Species	Mouse
Description	Boster Bio Anti-Growth Hormone/GH1 Antibody catalog # RP1024. Tested in WB applications. This antibody reacts with Mouse.
Application	WB
Clonality	Polyclonal
Formulation	Each vial contains 0.9mg NaCl, 0.2mg Na ₂ HPO ₄ , 0.05mg NaN ₃ . Carrier free (No BSA) form available in stock. If you want this antibody carrier free please specify "Carrier Free" or "No BSA" in your order note.
Storage Instructions	Store at -20°C for one year from date of receipt. After reconstitution, at 4°C for one month. It can also be aliquotted and stored frozen at -20°C for six months. Avoid repeated freeze-thaw cycles.
Host	Rabbit
Uniprot ID	P06880

Technical Details

Immunogen	E. coli-derived mouse GH recombinant protein (Position: F27-F216).
Recommended Detection Systems	Boster recommends Enhanced Chemiluminescent Kit with anti-Rabbit IgG (EK1002) for Western blot.
Cross Reactivity	No cross-reactivity with other proteins
Isotype	Rabbit IgG
Form	Lyophilized
Concentration	Adding 0.2 ml of distilled water will yield a concentration of 500 µg/ml.
Purification	Immunogen affinity purified.

Suggested Dilutions

Dilute the sample so that the expected range of concentrations fall within the detection range of this kit.

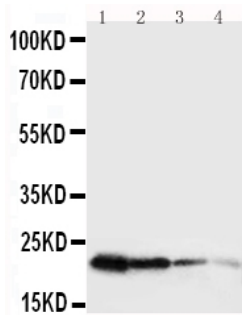
If the expected range of concentration is unknown, a pilot test should be conducted to decide the optimal dilution ratio for your samples.

Some PubMed article(s) citing the expression level of this target are as follows:

Boster Bio's internal QC testing used Western blot, 0.1-0.5 μ g/ml, Mouse

For protocols, please visit <https://www.bosterbio.com/protocol-and-troubleshooting/>

Anti-Growth Hormone/GH1 Antibody (RP1024) Images



Anti-mouse Growth Hormone antibody, RP1024, Western blotting

Lane 1: Recombinant Mouse GH Protein 10ng

Lane 2: Recombinant Mouse GH Protein 5ng

Lane 3: Recombinant Mouse GH Protein 2

Submit a product review to Biocompare.com

Submit a review of this product to Biocompare.com to receive a \$20 Amazon.com giftcard! Your reviews help your fellow scientists make the right decisions. Thank you for your contribution.



Anti-Growth Hormone/GH1 Antibody