

## Anti-Serine-protein kinase ATM ATM Antibody Picoband®

Catalog Number: RP1040

### About ATM

ATM (ataxia telangiectasia mutated), also known as TEL1 or TELO1, is a serine/threonine protein kinase that is recruited and activated by DNA double-strand breaks. The ATM protein is a member of the phosphatidylinositol 3-kinase family of proteins that respond to DNA damage by phosphorylating key substrates involved in DNA repair and/or cell cycle control. The ATM gene is mapped to chromosome 11q22.3. ATM has an essential role in the reconstitutive capacity of hematopoietic stem cells but is not as important for the proliferation or differentiation of progenitors in a telomere-independent manner. ATM functions directly in the repair of chromosomal DNA double-stranded breaks by maintaining DNA ends in repair complexes generated during lymphocyte gene assembly.

### Overview

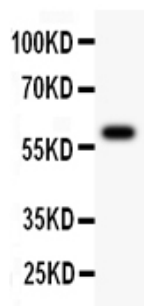
Product Name	Anti-Serine-protein kinase ATM ATM Antibody Picoband®
Reactive Species	Human
Description	Boster Bio Anti-Serine-protein kinase ATM <a href="#">ATM Antibody</a> catalog # RP1040. Tested in WB applications. This antibody reacts with Human. The brand Picoband indicates this is a premium antibody that guarantees superior quality, high affinity, and strong signals with minimal background in Western blot applications. Only our best-performing antibodies are designated as Picoband, ensuring unmatched performance.
Application	WB
Clonality	Polyclonal
Formulation	Each vial contains 4mg Trehalose, 0.9mg NaCl, 0.2mg Na2HPO4, 0.05mg NaN3.
Storage Instructions	Store at -20°C for one year from date of receipt. After reconstitution, at 4°C for one month. It can also be aliquotted and stored frozen at -20°C for six months. Avoid repeated freeze-thaw cycles.
Host	Rabbit
Uniprot ID	Q13315

### Technical Details

Immunogen	E.coli-derived human ATM recombinant protein (Position: D2870-V3056). Human ATM shares 95% amino acid (aa) sequence identity with mouse ATM.
Recommended Detection Systems	Boster recommends Enhanced Chemiluminescent Kit with anti-Rabbit IgG (EK1002) for Western blot.
Cross Reactivity	No cross-reactivity with other proteins
Isotype	Rabbit IgG

Form	Lyophilized
Concentration	Adding 0.2 ml of distilled water will yield a concentration of 500 ug/ml.
Purification	Immunogen affinity purified.
Suggested Dilutions	Western blot, 0.1-0.5ug/ml, Human

## Anti-Serine-protein kinase ATM ATM Antibody Picoband® (RP1040) Images



All lanes: Anti ATM (RP1040) at 0.5ug/mlWB: Recombinant Human ATM Protein 0.5ng  
Predicted bind size: 60KD  
Observed bind size: 60KD

### Submit a product review to Biocompare.com

Submit a review of this product to Biocompare.com to receive a \$20 Amazon.com giftcard! Your reviews help your fellow scientists make the right decisions. Thank you for your contribution.



Anti-Serine-protein kinase ATM ATM Antibody

For Research Use Only. Not for use in diagnostic procedures.