

Anti-SERCA3 ATPase/ATP2A3 Antibody

Catalog Number: RP1055

About ATP2A3

Sarcoplasmic/endoplasmic reticulum calcium ATPase 3, also known as SERCA3, is an enzyme that in humans is encoded by the ATP2A3 gene. It is mapped to 17p13.2. This gene encodes one of the SERCA Ca²⁺-ATPases, which are intracellular pumps located in the sarcoplasmic or endoplasmic reticula of cells. ATP2A3 expression was originally described as non-muscular, but was recently observed in cardiomyocyte. What's more, the expression of ATP2A3 was significantly reduced or lost in colon carcinomas compared with normal colonic epithelial cells. This enzyme catalyzes the hydrolysis of ATP coupled with the translocation of calcium from the cytosol to the sarcoplasmic reticulum lumen, and is involved in calcium sequestration associated with muscular excitation and contraction.

Overview

Product Name	Anti-SERCA3 ATPase/ATP2A3 Antibody
Reactive Species	Human, Mouse, Rat
Description	Boster Bio Anti-SERCA3 ATPase/ATP2A3 Antibody catalog # RP1055. Tested in IHC, WB applications. This antibody reacts with Human, Mouse, Rat.
Application	IHC, WB
Clonality	Polyclonal
Formulation	Each vial contains 5mg BSA, 0.9mg NaCl, 0.2mg Na ₂ HPO ₄ , 0.05mg NaN ₃ .
Storage Instructions	Store at -20°C for one year from date of receipt. After reconstitution, at 4°C for one month. It can also be aliquotted and stored frozen at -20°C for six months. Avoid repeated freeze-thaw cycles.
Host	Rabbit
Uniprot ID	Q93084

Technical Details

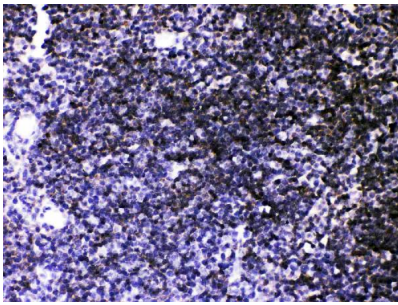
Immunogen	A synthetic peptide corresponding to a sequence at the N-terminus of human ATP2A3, different from the related mouse sequence by five amino acids, and from the related rat sequence by six amino acids.
Recommended Detection Systems	Boster recommends Enhanced Chemiluminescent Kit with anti-Rabbit IgG (EK1002) for Western blot, and HRP Conjugated anti-Rabbit IgG Super Vision Assay Kit (SV0002-1) for IHC(P).
Cross Reactivity	No cross-reactivity with other proteins
Isotype	Rabbit IgG
Form	Lyophilized

Concentration	Adding 0.2 ml of distilled water will yield a concentration of 500 ug/ml.
Purification	Immunogen affinity purified.
Suggested Dilutions	<p>Dilute the sample so that the expected range of concentrations fall within the detection range of this kit.</p> <p>If the expected range of concentration is unknown, a pilot test should be conducted to decide the optimal dilution ratio for your samples.</p> <p>Some PubMed article(s) citing the expression level of this target are as follows: Boster Bio's internal QC testing used: Immunohistochemistry (Paraffin-embedded Section), 0.5-1ug/ml, Mouse, Rat, Human, By Heat Western blot, 0.1-0.5ug/ml, Mouse, Rat, Human</p>

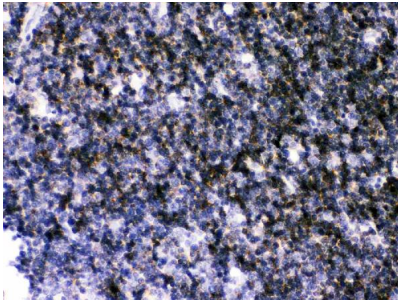
Anti-SERCA3 ATPase/ATP2A3 Antibody (RP1055) Images



Anti-ATP2A3 antibody, RP1055, Western blotting
All lanes: Anti ATP2A3 (RP1055) at 0.5ug/ml
Lane 1: Rat Skeletal Muscle Tissue Lysate at 50ug
Lane 2: Mouse Skeletal Muscle Tissue Lysate at 50ug
Predicted bind size: 114KD
Observed bind size: 114KD



Anti-ATP2A3 antibody, RP1055, IHC(P)
IHC(P): Mouse Thymus Tissue



Anti-ATP2A3 antibody, RP1055, IHC(P)
IHC(P): Rat Thymus Tissue

Submit a product review to Biocompare.com

Submit a review of this product to Biocompare.com to receive a \$20 Amazon.com giftcard! Your reviews help your fellow scientists make the right decisions. Thank you for your contribution.



Anti-SERCA3 ATPase/ATP2A3 Antibody