

Anti-Occludin/OCLN Antibody Picoband®

Catalog Number: RP1057

About OCLN

Occludin is an integral membrane protein that is located at tight junctions. It is a member of a family of proteins containing the highly conserved Marvel domain, which contains 4 transmembrane-helix regions. This gene is mapped to 5q13.2. Occludin regulates TGF-beta receptor type I localization for efficient TGF-beta-dependent dissolution of tight junctions during epithelial-mesenchymal transitions. Human Occludin is an essential hepatitis C virus (HCV) cell entry factor that is able to render murine cells infectable with HCV glycoproteins. It has been found that occludin is involved in cell migration and functions to recruit active PI3 kinase to the leading edge, resulting in RAC1 activation and formation of lamellipodia.

Overview

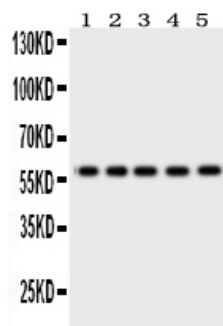
Product Name	Anti-Occludin/OCLN Antibody Picoband®
Reactive Species	Human
Description	Boster Bio Anti-Occludin/OCLN Antibody catalog # RP1057. Tested in IHC, WB applications. This antibody reacts with Human. The brand Picoband indicates this is a premium antibody that guarantees superior quality, high affinity, and strong signals with minimal background in Western blot applications. Only our best-performing antibodies are designated as Picoband, ensuring unmatched performance.
Application	IHC, WB
Clonality	Polyclonal
Formulation	Each vial contains 4mg Trehalose, 0.9mg NaCl, 0.2mg Na ₂ HPO ₄ , 0.05mg NaN ₃ .
Storage Instructions	Store at -20°C for one year from date of receipt. After reconstitution, at 4°C for one month. It can also be aliquotted and stored frozen at -20°C for six months. Avoid repeated freeze-thaw cycles.
Host	Rabbit
Uniprot ID	Q16625

Technical Details

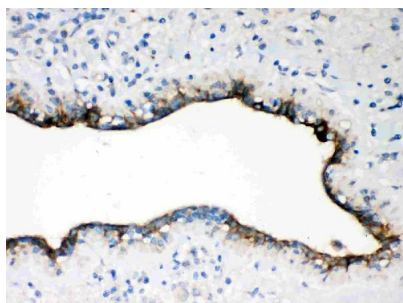
Immunogen	E.coli-derived human Occludin recombinant protein (Position: N373-T522). Human Occludin shares 89% amino acid (aa) sequence identity with both mouse and rat Occludin.
Recommended Detection Systems	Boster recommends Enhanced Chemiluminescent Kit with anti-Rabbit IgG (EK1002) for Western blot, and HRP Conjugated anti-Rabbit IgG Super Vision Assay Kit (SV0002-1) for IHC(P).
Cross Reactivity	No cross-reactivity with other proteins
Isotype	Rabbit IgG

Form	Lyophilized
Concentration	Adding 0.2 ml of distilled water will yield a concentration of 500 ug/ml.
Purification	Immunogen affinity purified.
Suggested Dilutions	Immunohistochemistry (Paraffin-embedded Section), 0.5-1ug/ml, Human Western blot, 0.1-0.5ug/ml, Human

Anti-Occludin/OCLN Antibody Picoband® (RP1057) Images



Anti-Occludin antibody, RP1057, Western blotting
All lanes:
Anti Occludin (RP1057) at 0.5ug/ml
Lane 1: SW620 Whole Cell Lysate at 40ug
Lane 2: COLO320 Whole Cell Lysate at 40ug
Lane 3: A549 Whole Cell Lysate at 40ug
Lane 4: 293T Whole Cell Lysate at 40ug
Lane 5: U87 Whole Cell Lysate at 40ug
Predicted bind size: 59KD
Observed bind size: 59KD



Anti-Occludin antibody, RP1057, IHC(P)
IHC(P): Human Mammary Cancer Tissue

Submit a product review to Biocompare.com

Submit a review of this product to Biocompare.com to receive a \$20 Amazon.com giftcard! Your reviews help your fellow scientists make the right decisions. Thank you for your contribution.



Anti-Occludin/OCLN Antibody

For Research Use Only. Not for use in diagnostic procedures.