

Anti-ERV31/ERV3-1 Antibody Picoband®

Catalog Number: RP1091

About ERV3-1

HERV-R_7q21.2 provirus ancestral Env polyprotein, also known as ERV3-1, is a protein that in humans is encoded by the ERV3 gene. By radiation hybrid analysis, the ERV3 gene is mapped to chromosome 7q11.2. The human genome includes many retroelements including the human endogenous retroviruses (HERVs). ERV3, one of the most studied HERVs, is thought to have integrated 30 to 40 million years ago and is present in higher primates with the exception of gorillas. Taken together, the observation of genome conservation, the detection of transcript expression, and the presence of conserved ORFs is circumstantial evidence for a functional role. A functional role is also suggested by the observation that downregulation of ERV3 is reported in choriocarcinoma.

Overview

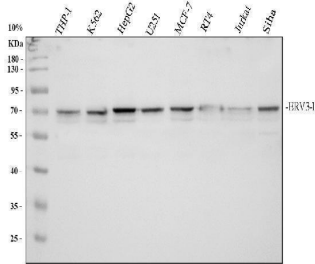
Product Name	Anti-ERV31/ERV3-1 Antibody Picoband®
Reactive Species	Human
Description	Boster Bio Anti-ERV31/ERV3-1 Antibody catalog # RP1091. Tested in WB applications. This antibody reacts with Human. The brand Picoband indicates this is a premium antibody that guarantees superior quality, high affinity, and strong signals with minimal background in Western blot applications. Only our best-performing antibodies are designated as Picoband, ensuring unmatched performance.
Application	WB
Clonality	Polyclonal
Formulation	Each vial contains antibody formulated with stabilizing components, 0.9 mg NaCl, 0.2 mg Na ₂ HPO ₄ , and 0.05 mg Na ₃ N. *This antibody is supplied in a stabilized formulation. Compatibility with conjugation reactions depends on the chemistry of the conjugation method used. For conjugation methods that are not compatible with the stabilizing components present in this formulation, a carrier-free antibody format is required.
Storage Instructions	Store at -20°C for one year from date of receipt. After reconstitution, at 4°C for one month. It can also be aliquotted and stored frozen at -20°C for six months. Avoid repeated freeze-thaw cycles.
Host	Rabbit
Uniprot ID	Q14264

Technical Details

Immunogen	A synthetic peptide corresponding to a sequence at the C-terminus of human ERV31.
Recommended Detection Systems	Boster recommends Enhanced Chemiluminescent Kit with anti-Rabbit IgG (EK1002) for Western blot.

Cross Reactivity	No cross-reactivity with other proteins
Isotype	Rabbit IgG
Form	Lyophilized
Concentration	Adding 0.2 ml of distilled water will yield a concentration of 500 ug/ml.
Purification	Immunogen affinity purified.
Suggested Dilutions	Western blot, 0.1-0.5ug/ml, Human

Anti-ERV31/ERV3-1 Antibody Picoband® (RP1091) Images



Western blot analysis of ERV31/ERV3-1 using anti-ERV31/ERV3-1 antibody (RP1091). Electrophoresis was performed on a 10% SDS-PAGE gel at 80V (Stacking gel) / 120V (Resolving gel) for 2 hours. The sample well of each lane was loaded with 30 ug of sample under reducing conditions. Lane 1: human THP-1 whole cell lysates, Lane 2: human K562 whole cell lysates, Lane 3: human HepG2 whole cell lysates, Lane 4: human U251 whole cell lysates, Lane 5: human MCF-7 whole cell lysates, Lane 6: human RT4 whole cell lysates, Lane 7: human Jurkat whole cell lysates, Lane 8: human SiHa whole cell lysates. After electrophoresis, proteins were transferred to a nitrocellulose membrane at 150 mA for 50-90 minutes. Blocked the membrane with 5% non-fat milk/TBS for 1.5 hour at RT. The membrane was incubated with rabbit anti-ERV31/ERV3-1 antigen affinity purified polyclonal antibody (RP1091) at 0.5 ug/mL overnight at 4°C, then washed with TBS-0.1%Tween 3 times with 5 minutes each and probed with a goat anti-rabbit IgG-HRP secondary antibody (Catalog # BA1054) at a dilution of 1:5000 for 1.5 hour at RT. The signal is developed using an ECL Plus Western Blotting Substrate (Catalog # AR1196-200) with Tanon 5200 system. A specific band was detected for ERV31/ERV3-1 at approximately 68 kDa. The expected band size for ERV31/ERV3-1 is at 68 kDa.

Submit a product review to Biocompare.com

Submit a review of this product to Biocompare.com to receive a \$20 Amazon.com giftcard! Your reviews help your fellow scientists make the right decisions. Thank you for your contribution.



Anti-ERV31/ERV3-1 Antibody

For Research Use Only. Not for use in diagnostic procedures.