

Anti-PU.1/Spi1 Antibody

Catalog Number: RP1097

About SPI1

Transcription factor PU.1 is a protein that in humans is encoded by the SPI1 gene. This gene encodes an ETS-domain transcription factor that activates gene expression during myeloid and B-lymphoid cell development. The nuclear protein binds to a purine-rich sequence known as the PU-box found near the promoters of target genes, and regulates their expression in coordination with other transcription factors and cofactors. The protein can also regulate alternative splicing of target genes. Multiple transcript variants encoding different isoforms have been found for this gene.

Overview

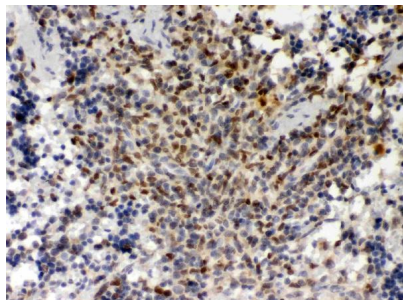
Product Name	Anti-PU.1/Spi1 Antibody
Reactive Species	Human, Mouse, Rat
Description	Boster Bio Anti-PU.1/Spi1 Antibody catalog # RP1097. Tested in IHC applications. This antibody reacts with Human, Mouse, Rat.
Application	IHC
Clonality	Polyclonal
Formulation	Each vial contains antibody formulated with stabilizing components, 0.9 mg NaCl, 0.2 mg Na ₂ HPO ₄ , and 0.05 mg NaN ₃ . *This antibody is supplied in a stabilized formulation. Compatibility with conjugation reactions depends on the chemistry of the conjugation method used. For conjugation methods that are not compatible with the stabilizing components present in this formulation, a carrier-free antibody format is required.
Storage Instructions	Store at -20°C for one year from date of receipt. After reconstitution, at 4°C for one month. It can also be aliquotted and stored frozen at -20°C for six months. Avoid repeated freeze-thaw cycles.
Host	Rabbit
Uniprot ID	P17947

Technical Details

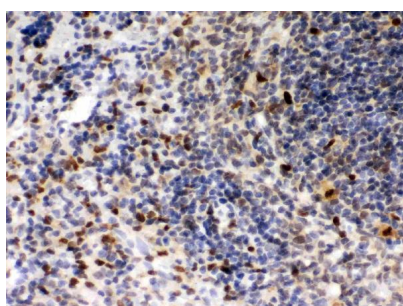
Immunogen	E.coli-derived human PU.1/Spi1 recombinant protein (Position: E18-K196). Human PU.1/Spi1 shares 84% and 84.4% amino acid (aa) sequence identity with mouse and rat PU.1/Spi1, respectively.
Recommended Detection Systems	Boster recommends HRP Conjugated anti-Rabbit IgG Super Vision Assay Kit (SV0002-1) for IHC(P).
Cross Reactivity	No cross-reactivity with other proteins
Isotype	Rabbit IgG
Form	Lyophilized

Concentration	Adding 0.2 ml of distilled water will yield a concentration of 500 ug/ml.
Purification	Immunogen affinity purified.
Suggested Dilutions	Immunohistochemistry (Paraffin-embedded Section), 0.5-1ug/ml, Human, Mouse, Rat

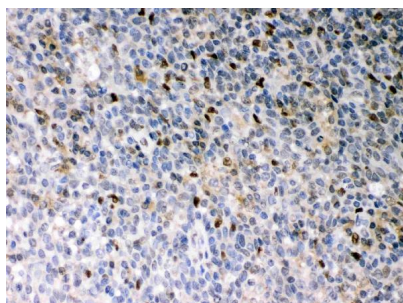
Anti-PU.1/Spi1 Antibody (RP1097) Images



Anti-PU.1/Spi1 antibody, RP1097, IHC(P)IHC(P): Mouse Spleen Tissue



Anti-PU.1/Spi1 antibody, RP1097, IHC(P)IHC(P): Rat Spleen Tissue



Anti-PU.1/Spi1 antibody, RP1097, IHC(P)IHC(P): Human Tonsil Tissue

Submit a product review to [Biocompare.com](https://www.biocompare.com)

Submit a review of this product to [Biocompare.com](https://www.biocompare.com) to receive a \$20 Amazon.com giftcard! Your reviews help your fellow scientists make the right decisions. Thank you for your contribution.



Anti-PU.1/Spi1 Antibody

For Research Use Only. Not for use in diagnostic procedures.