

Anti-SMURF 2/SMURF2 Antibody Picoband®

Catalog Number: RP1102

About SMURF2

E3 ubiquitin-protein ligase SMURF2 is an enzyme that in humans is encoded by the SMURF2 gene. The SMURF2 gene is mapped to chromosome 17q22-q23 based on sequence similarity between the SMURF2 sequence and a genomic contig. SMURF2 is a HECT domain E3 ubiquitin ligase involved in degradation of SMADs, TGF-beta receptor (TGFBR), and other substrates. It also functions in regulation of neuronal and planar cell polarity, induction of senescence, and tumor suppression

Overview

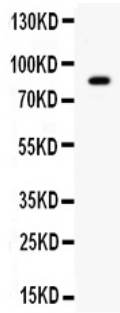
Product Name	Anti-SMURF 2/SMURF2 Antibody Picoband®
Reactive Species	Human, Mouse, Rat
Description	Boster Bio Anti-SMURF 2/SMURF2 Antibody catalog # RP1102. Tested in WB applications. This antibody reacts with Human, Mouse, Rat. The brand Picoband indicates this is a premium antibody that guarantees superior quality, high affinity, and strong signals with minimal background in Western blot applications. Only our best-performing antibodies are designated as Picoband, ensuring unmatched performance.
Application	WB
Clonality	Polyclonal
Formulation	Each vial contains antibody formulated with stabilizing components, 0.9 mg NaCl, 0.2 mg Na ₂ HPO ₄ , and 0.05 mg NaN ₃ . *This antibody is supplied in a stabilized formulation. Compatibility with conjugation reactions depends on the chemistry of the conjugation method used. For conjugation methods that are not compatible with the stabilizing components present in this formulation, a carrier-free antibody format is required.
Storage Instructions	Store at -20°C for one year from date of receipt. After reconstitution, at 4°C for one month. It can also be aliquotted and stored frozen at -20°C for six months. Avoid repeated freeze-thaw cycles.
Host	Rabbit
Uniprot ID	Q9HAU4

Technical Details

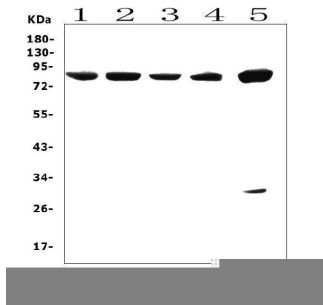
Immunogen	A synthetic peptide corresponding to a sequence in the middle region of human SMURF 2, identical to the related mouse sequence.
Recommended Detection Systems	Boster recommends Enhanced Chemiluminescent Kit with anti-Rabbit IgG (EK1002) for Western blot.
Cross Reactivity	No cross-reactivity with other proteins.

Isotype	Rabbit IgG
Form	Lyophilized
Concentration	Adding 0.2 ml of distilled water will yield a concentration of 500 ug/ml.
Purification	Immunogen affinity purified.
Suggested Dilutions	Western blot, 0.1-0.5ug/ml, Human, Mouse, Rat

Anti-SMURF 2/SMURF2 Antibody Picoband® (RP1102) Images



Western blot analysis of SMURF2 using anti-SMURF2 antibody (RP1102). Electrophoresis was performed on a 5-20% SDS-PAGE gel at 70V (Stacking gel) / 90V (Resolving gel) for 2-3 hours. The sample well of each lane was loaded with 50ug of sample under reducing conditions. Lane 1: SMMC whole cell lysates. After Electrophoresis, proteins were transferred to a Nitrocellulose membrane at 150mA for 50-90 minutes. Blocked the membrane with 5% Non-fat Milk/ TBS for 1.5 hour at RT. The membrane was incubated with rabbit anti-SMURF2 antigen affinity purified polyclonal antibody (Catalog # RP1102) at 0.5 ug/mL overnight at 4°C, then washed with TBS-0.1%Tween 3 times with 5 minutes each and probed with a goat anti-rabbit IgG-HRP secondary antibody at a dilution of 1:10000 for 1.5 hour at RT. The signal is developed using an Enhanced Chemiluminescent detection (ECL) kit (Catalog # EK1002) with Tanon 5200 system. A specific band was detected for SMURF2 at approximately 86KD. The expected band size for SMURF2 is at 86KD.



Western blot analysis of SMURF2 using anti-SMURF2 antibody (RP1102). Electrophoresis was performed on a 5-20% SDS-PAGE gel at 70V (Stacking gel) / 90V (Resolving gel) for 2-3 hours. The sample well of each lane was loaded with 50ug of sample under reducing conditions. Lane 1: rat testis tissue lysates, Lane 2: rat pancreas tissue lysates, Lane 3: rat stomach testis lysates, Lane 4: mouse testis tissue lysates. Lane 5: mouse pancreas tissue lysates. After Electrophoresis, proteins were transferred to a Nitrocellulose membrane at 150mA for 50-90 minutes. Blocked the membrane with 5% Non-fat Milk/ TBS for 1.5 hour at RT. The membrane was incubated with rabbit anti-SMURF2 antigen affinity purified polyclonal antibody (Catalog # RP1102) at 0.5 ug/mL overnight at 4°C, then washed with TBS-0.1%Tween 3 times with 5 minutes each and probed with a goat anti-rabbit IgG-HRP secondary antibody at a dilution of 1:10000 for 1.5 hour at RT. The signal is developed using an Enhanced Chemiluminescent detection (ECL) kit (Catalog # EK1002) with Tanon 5200 system. A specific band was detected for SMURF2 at approximately 86KD. The expected band size for SMURF2 is at 86KD.

Submit a product review to Biocompare.com

Submit a review of this product to Biocompare.com to receive a \$20 Amazon.com giftcard! Your reviews help your fellow scientists make the right decisions. Thank you for your contribution.



Anti-SMURF 2/SMURF2 Antibody

For Research Use Only. Not for use in diagnostic procedures.