

Anti-LFA3/CD58 Antibody Picoband®

Catalog Number: RP1106

About CD58

CD58, or lymphocyte function-associated antigen 3 (LFA-3), is a cell adhesion molecule expressed on Antigen Presenting Cells (APC), particularly macrophages. It binds to CD2 (LFA-2) on T cells and is important in strengthening the adhesion between the T cells and Professional Antigen Presenting Cells. This adhesion occurs as part of the transitory initial encounters between T cells and Antigen Presenting Cells before T cell activation, when T cells are roaming the lymph nodes looking at the surface of APCs for peptide:MHC complexes the T-cell receptors are reactive to. The LFA3 gene is mapped to chromosome 1p13, which is the same location as CD2.

Overview

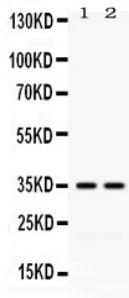
Product Name	Anti-LFA3/CD58 Antibody Picoband®
Reactive Species	Human
Description	Boster Bio Anti-LFA3/CD58 Antibody catalog # RP1106. Tested in Flow Cytometry, IHC, WB applications. This antibody reacts with Human. The brand Picoband indicates this is a premium antibody that guarantees superior quality, high affinity, and strong signals with minimal background in Western blot applications. Only our best-performing antibodies are designated as Picoband, ensuring unmatched performance.
Application	Flow Cytometry, IHC, WB
Clonality	Polyclonal
Formulation	Each vial contains antibody formulated with stabilizing components, 0.9 mg NaCl, 0.2 mg Na ₂ HPO ₄ , and 0.05 mg NaN ₃ . *This antibody is supplied in a stabilized formulation. Compatibility with conjugation reactions depends on the chemistry of the conjugation method used. For conjugation methods that are not compatible with the stabilizing components present in this formulation, a carrier-free antibody format is required.
Storage Instructions	Store at -20°C for one year from date of receipt. After reconstitution, at 4°C for one month. It can also be aliquotted and stored frozen at -20°C for six months. Avoid repeated freeze-thaw cycles.
Host	Rabbit
Uniprot ID	P19256

Technical Details

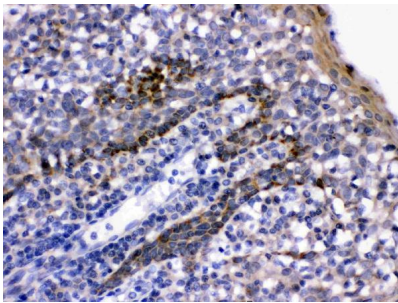
Immunogen	E. coli-derived human LFA3 recombinant protein (Position: F29-R215).
Recommended Detection Systems	Boster recommends Enhanced Chemiluminescent Kit with anti-Rabbit IgG (EK1002) for Western blot, and HRP Conjugated anti-Rabbit IgG Super Vision Assay Kit (SV0002-1) for IHC(P).
Cross Reactivity	No cross-reactivity with other proteins

Isotype	Rabbit IgG
Form	Lyophilized
Concentration	Adding 0.2 ml of distilled water will yield a concentration of 500 ug/ml.
Purification	Immunogen affinity purified.
Suggested Dilutions	Western blot, 0.1-0.5ug/ml Immunohistochemistry (Paraffin-embedded Section), 0.5-1ug/ml Flow Cytometry, 1-3ug/1x10 ⁶ cells

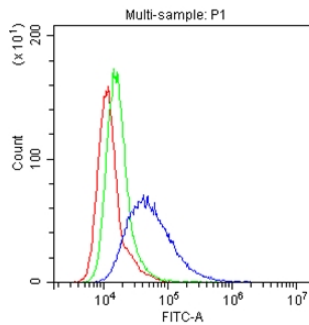
Anti-LFA3/CD58 Antibody Picoband® (RP1106) Images



Western blot analysis of LFA3 expression in HELA whole cell lysates (lane 1) and K562 whole cell lysates (lane 2). LFA3 at 35KD was detected using rabbit anti-LFA3 Antigen Affinity purified polyclonal antibody (Catalog # RP1106) at 0.5 ug/mL. The blot was developed using chemiluminescence (ECL) method (Catalog # EK1002).



LFA3 was detected in paraffin-embedded sections of human tonsil tissues using rabbit anti-LFA3 Antigen Affinity purified polyclonal antibody (Catalog # RP1106) at 1 ug/mL. The immunohistochemical section was developed using SABC method (Catalog # SA1022).



Flow Cytometry analysis of HeLa cells using anti-LFA3 antibody (RP1106). Overlay histogram showing HeLa cells stained with RP1106 (Blue line). The cells were blocked with 10% normal goat serum. And then incubated with rabbit anti-LFA3 Antibody (RP1106, 1ug/1x10⁶ cells) for 30 min at 20°C. DyLight488 conjugated goat anti-rabbit IgG (BA1127, 5-10ug/1x10⁶ cells) was used as secondary antibody for 30 minutes at 20°C. Isotype control antibody (Green line) was rabbit IgG (1ug/1x10⁶) used under the same conditions. Unlabelled sample (Red line) was also used as a control.

Submit a product review to Biocompare.com

Submit a review of this product to Biocompare.com to receive a \$20 Amazon.com giftcard! Your reviews help your fellow scientists make the right decisions. Thank you for your contribution.



Anti-LFA3/CD58 Antibody

For Research Use Only. Not for use in diagnostic procedures.